

# ELV BOOTPRO INSTALLATION GUIDE

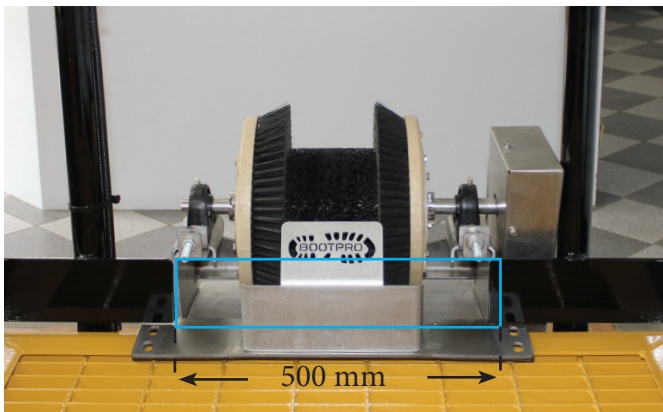


**This installation guide serves as a reference ONLY and should be followed alongside machine manufacturer's recommendations. The Bootpro ELV must be installed by qualified and competent technicians.**

## COMPLETE ALL STEPS PRIOR TO USE

### STEP 1

- Select an installation location that is flat and clear of obstructions (ensure handrail is fixed in place above).
- Check for other services or devices nearby (Hydraulic/ pneumatic lines or electrical cables visible or concealed).



### STEP 2

- Cut a 500mm section out of the platform kick rail where the BootPro is to be installed.

### STEP 3

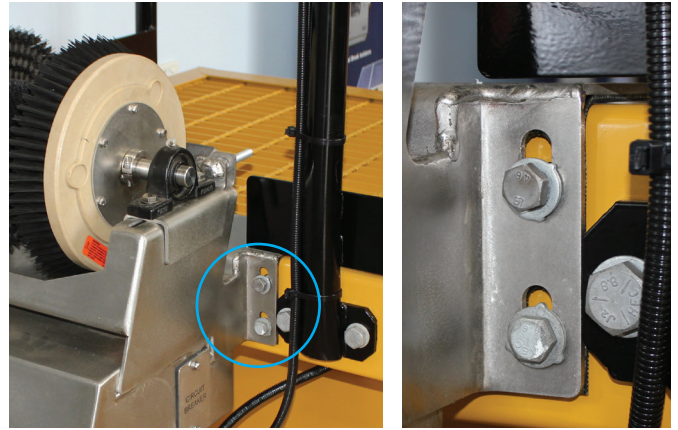
- Mark out and drill at least 4 of the 8 mounting holes in the side wall or floor in the desired location.

(NOTE: Grate mesh floor will not require drilling into as clamps can be used).



## STEP 4

- Mount the BootPro ELV using (min 4) high tensile bolts M12 or similar and tighten.



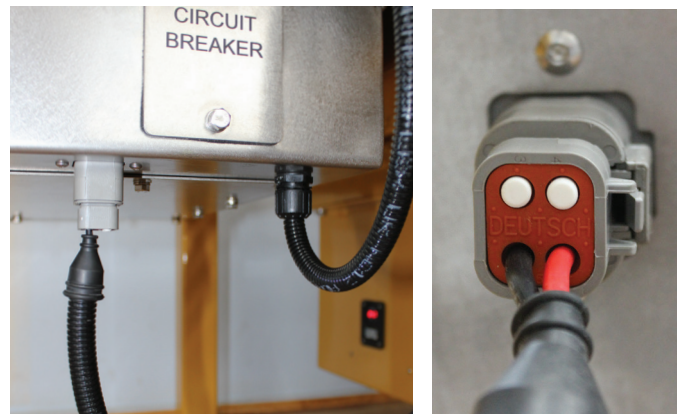
## STEP 5

- Install the Pre-wired start Button on the handrail above the BootPro ELV. To be easily accessible for using the BootPro
- Secure the cabling in place using appropriate cable support techniques to prevent cable vibrating.



## STEP 6

- Run a 15A 24VDC Supply (fused).
- Install the supplied Deutsch Connector wiring the positive (+) to Pin 1 and the Negative (-) to Pin 2. Pins 3 and 4 are left spare.



## STEP 7

- Check that all covers are secure and bolts are tight. Test the BootPro by pressing the 'Start' Button and check that the BootPro is powered correctly.



FOR QUESTIONS OR  
INFORMATION CALL

**02 4964 9660**

OR SCAN QR CODE

